



RAMPING UP for the Future

ADOT

MARCH 2021 | VOL. 2 NO. 2

STATE ROUTE 189: INTERNATIONAL BORDER TO GRAND AVENUE NEWSLETTER

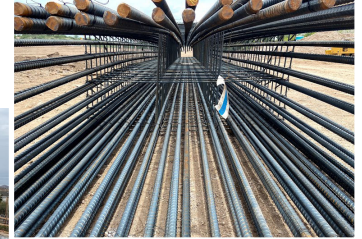
A bimonthly newsletter from the Arizona Department of Transportation to share important information about the State Route 189 project

IT'S GETTING EXCITING!

The State Route 189 project brings hope, excitement and opportunity to Nogales and beyond. You can't help but see all of the progress and potential when you are anywhere near the project area. ADOT anticipates the project will be complete in just more than six months, providing a new vision for expanded efficiency. For instance, six billion pounds of



produce pass through the Mariposa Port of Entry into the United States annually. The SR 189 project will help that produce arrive at its destination more quickly and safely. The future is ripe with opportunity!



CONSTRUCTION UPDATE



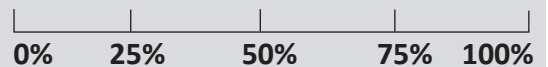
- Flyover ramp south-to-west (southbound I-19 to westbound SR 189) will be 1,800 feet long and 32 feet wide.
- Flyover ramp east-to-north (eastbound SR 189 to northbound I-19) will be a half-mile long and 32 feet wide.
- The maximum height of the flyover bridges will be 60 feet above ground.

- Crews will start pouring the concrete bridge decks mid-March and continue pouring one deck each week for approximately the next 11 weeks.
- All of the piers, and the caps on top of the piers, for the flyover bridges are scheduled to be complete in March.
- Later in March, crews plan to begin setting girders for the new bridge over Frank Reed Road, where the two flyover bridges come together in the SR 189 median.
- Girders are very large reinforced-concrete beams that support a structure such as a bridge. Crews will set girders for the first six spans (parts) of the eastbound (SR 189) to northbound (I-19) and southbound (I-19) to westbound (SR 189) bridges. These sections of the bridges have six spans (parts) with seven girders each, for a total of 42.
- The girders used for the bridges are between 120 and 165 feet long.
- The second of three construction phases for the roundabout at SR 189 and Target Range Road has started. The temporary traffic configuration is working well.
- The north side of SR 189 between Grand Avenue and I-19 has received new curb and gutters, and paving will be completed by the end of March.
- The project is on schedule to be completed this fall.

PERCENTAGE COMPLETION

ALMOST 70%
PROJECT CONSTRUCTION

100%
PROJECT DESIGN



COMMUNITY MEMBER PROFILE

UNDERSECRETARY OF URBAN DEVELOPMENT, ARCHITECT ÁNGEL LÓPEZ

Architect Ángel López with the Secretary of Infrastructure and Urban Development (SIDUR) in Mexico has worked for the last five years throughout



ÁNGEL LÓPEZ
Undersecretary for the Secretary of Infrastructure and Urban Development

the state of Sonora in cities of all sizes, such as Navojoa and Hermosillo, to strengthen regional urban development programs. He is in charge of continuing to promote coordination mechanisms to advance urban planning systems and strategic projects that strengthen the Sonora-Arizona Megaregion.

He is confident that because of the Mariposa Port of Entry—with more commercial and private vehicle crossings in the state of Sonora—and the connection of the international

freeway, Mexico 15, the backbone of the region's economy, the State Route 189 project will benefit all Sonoran citizens who have tourist or business needs, mainly in Tucson and Phoenix.



State Route 189 will reduce transportation and communication costs by reducing travel time by at least 10 minutes, strengthening economic and social exchange, thus promoting both states as investment attractors that benefit citizens of both border states in high percentages," López said.

"It will also encourage international trade by promoting the importation and distribution of various economic activities, such as: the flow of fresh produce; electronics; raw materials such as paper, plastic and wood; mining products; and automotive and aerospace products, thereby creating safer intersections and increasing efficiency when accessing I-19," he said.



It is of great importance to continue working through international channels such as the Sonora-Arizona and Arizona-Mexico commissions that share a binational and regional vision," according to López.



He says investing in infrastructure projects that directly impact borders increases the security and efficiency of logistics.

He adds that the administration led by Sonoran Governor Claudia Pavlovich Arellano and Arizona Governor Doug Ducey have made great progress. López says having created the Sonora-Arizona Megaregion promotes joint actions in government, society and the economy to make these projects possible.

6 billion

pounds of produce is imported from Mexico annually through Nogales, Ariz.

20%

of all jobs in Santa Cruz County are related to importing and distribution of winter fruits and vegetables

Common winter fruits and vegetables entering the country through the Mariposa Port of Entry are:



tomatoes, squash, green beans, cucumbers, peppers, mangoes, melon, eggplant, onion, citrus



ADOT PROJECT TEAM MEMBER

JOSIAH ROBERTS, P.E.
GENERAL ENGINEERING CONTRACTOR

2020 changed everything for transportation professionals like Josiah Roberts, general engineering contractor for the State Route 189 improvement project.



JOSIAH ROBERTS, P.E.
General Engineering Contractor

He manages a staff of technical experts as part of his role to provide design oversight for the Arizona Department of Transportation. Typically, he would be housed in an office with the designer, contractor and ADOT to facilitate day-to-day coordination. Suddenly everything had to be conducted virtually.

collaboration that normally happens in a design-build project like this, that just wasn't possible anymore. We had to adapt, and there were definitely some bumps in the road at first," he said.

Despite this challenge, SR 189 construction is moving forward and remains on schedule.

When work is completed sometime in the fall of this year, the improvements between the Mariposa Port of Entry and Grand Avenue will make commercial truck traffic safer and more efficient, and

will bring two new highway features to this part of Arizona. "From a technical perspective, the project is unique because it has large flyover structures and a roundabout intersection, both of which are unique to the area," Roberts said.

Roberts has a Bachelor of Science degree from the University of Arizona. He liked math and science in high school and "drifted" toward engineering when it came time to enter college. A high school friend steered him toward civil engineering.

"Civil engineering is so varied, and there are so many different aspects," he said. "I took a transportation elective class and that's when I decided to go into this field."

After college he worked for a short while for the Town of Oro Valley, then relocated to Phoenix to further his career. That was 25 years ago, and since then Roberts has worked on several high-profile projects in Arizona and other western states.

One of his notable achievements was the preliminary engineering for the Loop 303 freeway in northwest Maricopa County. "I was responsible for setting the initial alignment and configuration for the northern 17 miles, which was ultimately constructed. Seeing a new freeway facility constructed using my configuration was very rewarding."

His focus now is on SR 189 and improving traffic flow from the international border to Grand Avenue.

Josiah and his wife have a two-year-old daughter. In his free time he loves to cycle all over the greater Phoenix area. He took a break from cycling for a while, but started again

in August of 2020 and managed to ride 1,000 miles by the end of the year.

One of the most unique aspects of the project is the customers it serves, namely the large volume of truck traffic passing through the Mariposa Port of Entry, which is the fourth busiest land port in the country," he said. "The project will have a positive impact on this traffic and the international trade it supports."
- Josiah Roberts

HOW TO CONTACT THE ADOT PROJECT TEAM:
EMAIL: SR189@AZDOT.GOV
24-7 HOTLINE: 1.833.613.0496
WEB: AZDOT.GOV/SR189